

Patuxent Park Revitalization Project Phase 2

Public Informational Meeting

April 7, 2011 – 7:00 PM
Bay District Volunteer Fire Department – Social Hall
Lexington Park, Maryland

Presented by:

The St. Mary's County Metropolitan Commission
and
The St. Mary's County Department of Public Works and Transportation

On behalf of:

The St. Mary's County Metropolitan Commission

Kathleen Werner, Chairperson
Thomas C. Lancaster Brenda L. Hanson Thomas Tudor J. Paul Colonna
Charles V. Owen Joseph A. St. Clair Capt. Stephen Schmeiser
Jacquelyn V. Meiser, Director

and

The St. Mary's County Board of County Commissioners

Francis Jack Russell, President
Lawrence D. Jarboe Cynthia L. Jones Todd B. Morgan Daniel L. Morris
George A. Erichsen, Director of the Department of Public Works and Transportation

Introduction

The St. Mary's County Metropolitan Commission (METCOM) and the St. Mary's County Government, Department of Public Works and Transportation (DPW&T) are planning to move forward with the construction of Phase 2 for the Patuxent Park Revitalization Project. The Project includes the installation of new water/sewer lines, reconstruction of roads, sidewalks, storm drainage, and storm water management for Great Mills Lane and North Essex Drive (from Great Mills Lane to Saratoga Drive). Phase 1 construction was completed in August of 2010 and included the reconstruction of part of Midway Drive, Princeton Drive, Gambier Place and Bunker Hill Drive.

Purpose of the Public Informational Meeting

The public meeting will provide the most recent information concerning the project, which includes; background of the project, meeting notification, water and sewer improvements, road improvements, estimated construction schedule and parking restrictions for the project.

Background of the Project

A Chamber of Commerce Work Force Housing Task Force Report was presented to the Board of County Commissioners on May 26, 2006 and described the neighborhood as severely distressed and recommended that a meaningful level of funding for the reconstruction of aging public infrastructure be allocated. Public Information Meetings will be held for each phase of the project, similar to those held for phases 1 and 2. Construction of Phase 1 was performed by Gradient Construction and was completed in August of 2010. Design of the Water and Sewer Reconstruction Plans for Phase 2 was prepared by Whitman, Requardt and Associates and the Road Reconstruction Plans by D.H. Steffens, Company. Construction of Phase 2 is scheduled to take seven months to complete.

Public Informational Meeting Notification

A Public Meeting Notice informing the public of tonight's meeting appeared in The Enterprise newspaper on March 25th and April 1st, 2011. Postcards were mailed to all property owners within the Patuxent Park Subdivision and certified letters were also sent to the property owners directly affected by Phase 2 construction.

Project Phasing

Water and sewer improvements by METCOM will consist of three (3) phases of work to be performed over the next three (3) years. Design for METCOM water and sewer improvements for Phase 2 has been completed and the construction contract is in the process of being advertised by METCOM. Construction of the water and sewer improvements is expected to begin in May of 2011. Roadway improvements by the DPW&T consist of five (5) phases of work to be performed over the next four (4) years. Design for DPW&T road improvements for Phase 2 has been completed and the construction contract will be advertised in June of 2011. Construction of the road improvements is expected to begin in August of 2011.

Water and Sewer Improvements

The sewerage collection system within Patuxent Park was constructed by the U.S. Navy in the mid 1940's. The sewers are over 60 years old and in need of rehabilitation and replacement. The water system constructed during that time is also in need of upgrading, to include water mains, valves and fire hydrants. Water and Sewer construction for Phase 2 consists of the replacement of approximately 1,025 linear feet of water main, including 26 water service connections from the main to the meter, and 2 new fire hydrants on North Essex Drive. The water main on Great Mills Lane has already been replaced during the Great Mills Road Streetscape Project. Work on North Essex Drive also includes the replacement of 29 sanitary sewer house connections and the installation of associated new cleanouts. The sanitary sewer main on North Essex Drive was previously rehabilitated under a project in April 2008. Phase 2 also includes rehabilitating approximately 817 linear feet of sanitary sewer main on Great Mills Lane using a cured-in-place liner and replacing 9 sanitary sewer house connections and installing their associated new cleanouts.

Road Improvements

The road network is in poor condition with minimal storm drainage collection being provided, dilapidating concrete curbs, severe cracking of the bituminous asphalt, and numerous areas of settlement in the roadways caused by years of repairs to the water/sewer lines and storm drainage pipes. Phase 2 roadway improvements

Road Improvements (Cont.)

include the reconstruction of concrete curb/gutters, concrete sidewalks, roadway base material, bituminous asphalt pavement, driveway entrance aprons and storm drainage pipes/inlets. Some of the work will involve the installation of approximately 1,520 linear feet of reinforced concrete pipe, 18 storm drain inlets, 3,400 linear feet of new concrete curb/gutter, and 1,760 linear feet of concrete sidewalk. Also included will be two (2) storm water management devices on the southern side of North Essex Drive. In locations where trees/shrubs need to be removed for construction within the road right-of-way, we will work with the adjacent property owners to provide replacement vegetation on their property. Fences located within the road right-of-way that are within the grading limits will be removed and replaced in-kind along the right-of-way line. SMECO utility poles will be relocated along the northern side of North Essex Drive in order for new storm drainage pipes to be installed.

Phase 2 – Estimated Construction Schedule



Parking Restrictions

We are requesting assistance from the residents by removing parked vehicles from the roadway so that work can be accomplished in a timely fashion and will not delay the contractor from completing work. "No Parking Signs" will be posted 2 days prior to work being performed on affected streets to give everyone time to relocate their vehicles. If vehicles are not moved from the roadway, vehicles will be towed. We will work with every resident to inform them of the areas scheduled to be constructed to avoid having vehicles towed from the site. We appreciate the resident's cooperation in this matter.

Project Contact information

Questions and/or comments regarding this project, the Public Meeting(s), and other upcoming events should be addressed to:

Mr. Allen Settle, Project Manager
St. Mary's County Government
Dept. of Public Works and Transportation
P.O. Box 508
California, MD 20619

Telephone: (301) 863-8400, ext. 3525
Fax: (301) 863-8810
Email: allen.settle@stmarysmd.com
Web: www.stmarysmd.com

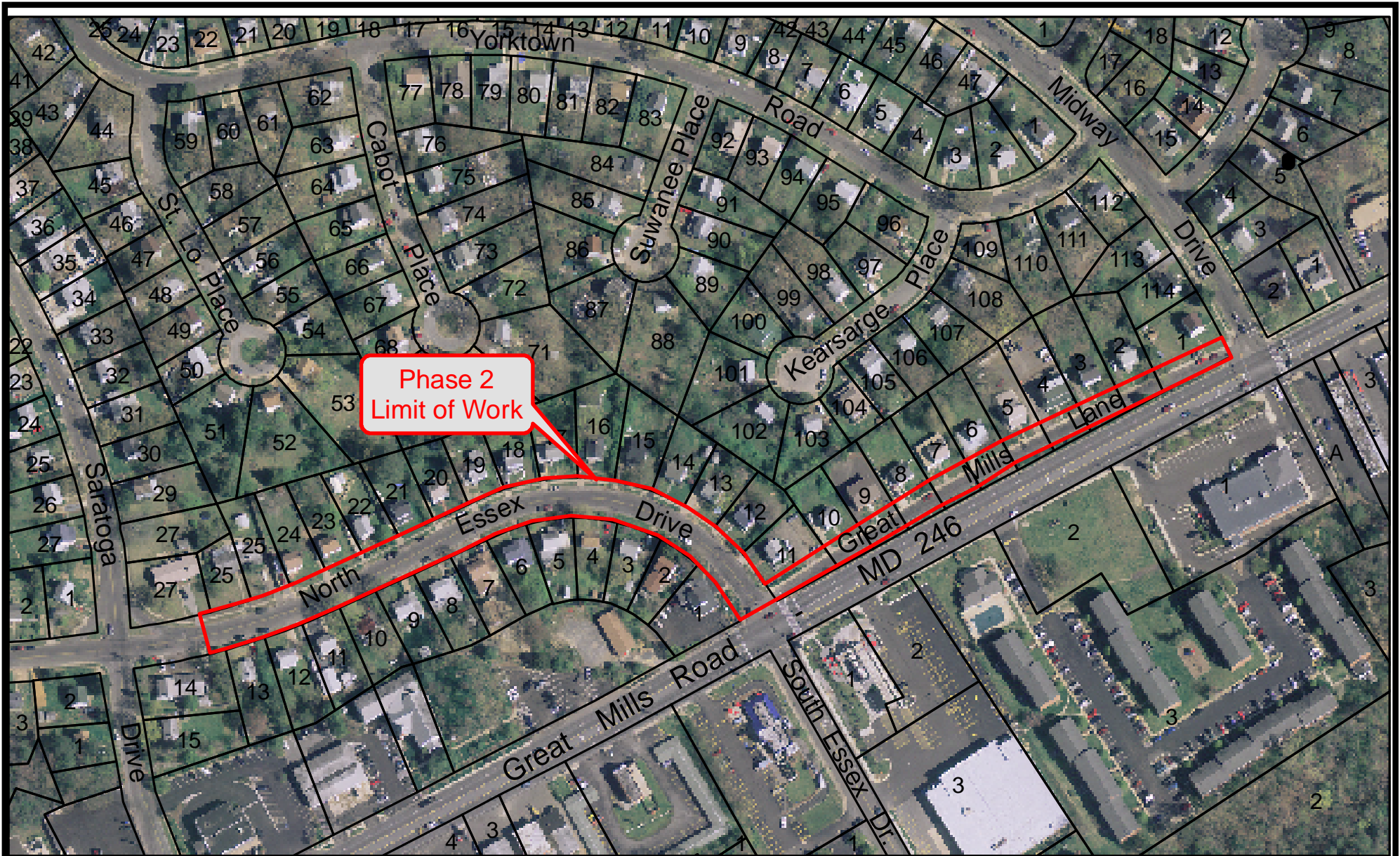
or

Mr. Steven Engleson, Project Manager
St. Mary's County Metropolitan Commission
43990 Commerce Avenue
Hollywood, MD 20636

Telephone: (301) 373-4733, ext. 307
Email: sengleson@metcom.org
Web: www.metcom.org

Thank You

Thank you for attending this Public Information Meeting. Your participation and feedback are appreciated. Please feel free to contact us with any additional questions and/or comments.



Patuxent Park Revitalization Project - Phase 2

