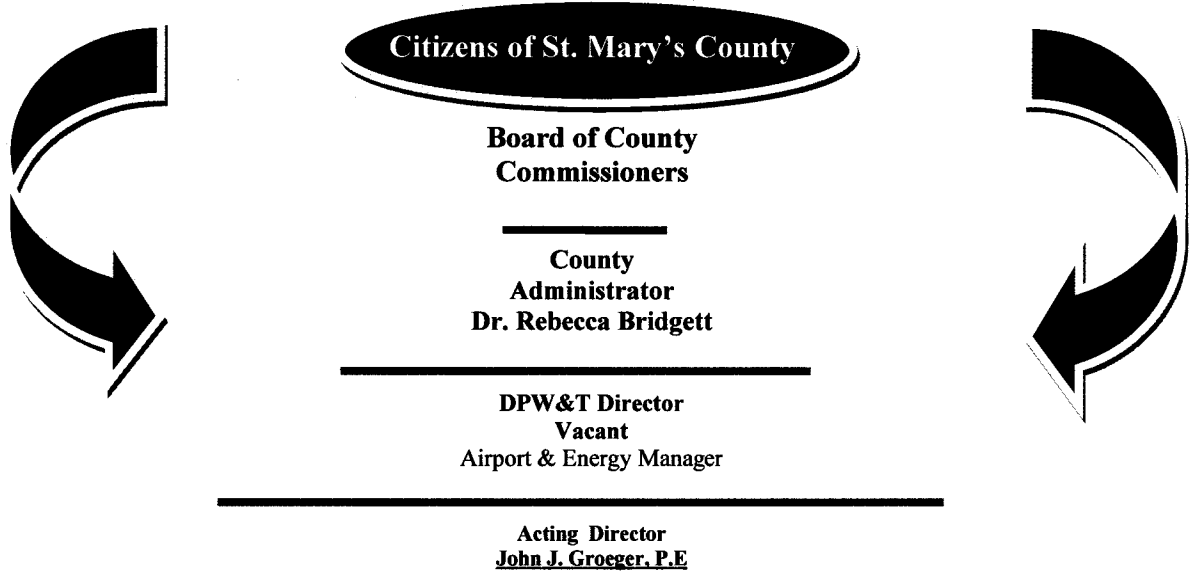


Department of Public Works & Transportation St. Mary's County Government

Functional Organizational Chart



County Highways Manager <u>Richard P. Tarr</u>	Transportation Manager <u>Jacqueline Fournier</u>	Engineering Services Manager & Acting Airport Manager <u>Gary W. Whipple, P.E.</u>	Development Review	Construction & Inspections Manager <u>William B. Buckler</u>	Recycling & Solid Waste Manager <u>Nicholas T. Zurkan</u>	Building Services Manager <u>Randy Miedzinski</u>	Administrative and Fiscal Manager <u>Joyce Ford</u>
↓	↓	↓	↓	↓	↓	↓	↓
Road Maintenance Snow / Ice Removal Drainage Response Traffic Signage Mowing / Trimming Obstruction Removal Bridges & Culverts Inventory / Supply	Vehicle Maintenance Equipment Replacement Fleet Management STS Transit System Metro Mail Service Non-Public Buses Grant Administration	Engineering & Design Capital Planning Project Management Traffic Calming Shoreline Protection	Land Development Development Review Stormwater Management	Capital Construction Inspection Services Materials Testing Contract Management Pavement Evaluation Facilities Support Quality Control Utility Coordination	Solid Waste Planning Recycling Programs Convenience Centers Landfill Operations Permit Compliance Environmental Monitoring & Remediation	Facilities Management Building Maintenance Energy Conservation Public Utilities Custodial Services Elevators /Generators Safety & Security Asset Management	Budgeting Procurement Administration

Mission Statement: "To service the community of St. Mary's County by assuring its transportation/facilities management, development review, solid waste and recycling programs are properly planned, implemented and maintained"

"SERVING THE COMMUNITY"